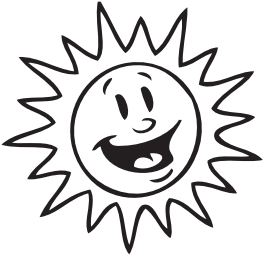




Division

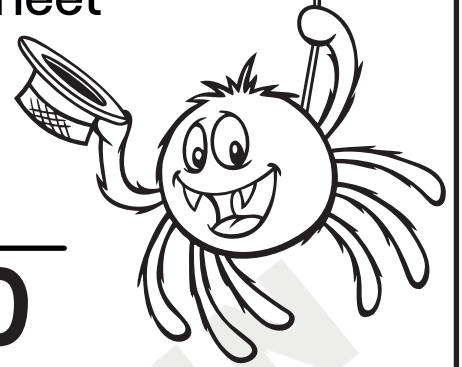
Double Digit Division Worksheet



$$13 \overline{) 52}$$

$$12 \overline{) 84}$$

$$15 \overline{) 90}$$



$$16 \overline{) 80}$$

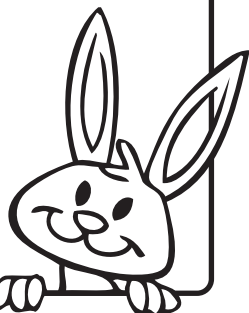
$$19 \overline{) 76}$$

$$18 \overline{) 90}$$

$$17 \overline{) 85}$$

$$14 \overline{) 84}$$

$$11 \overline{) 77}$$



More study materials